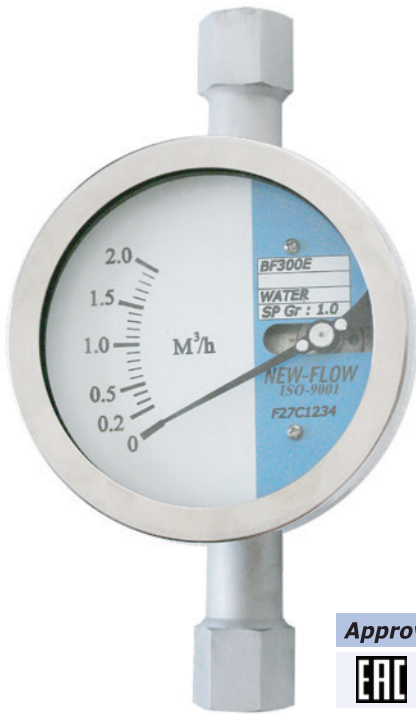


METAL TUBE FLOW METER BF300E



Technical Data

BF300E for high flows of gas, liquid and steam

Case Material: SS316

Body wetted parts: SS316, Others on request.

Indication via magnetic coupling (no sealed)

Scales calibrated: in l/h, m³/h, kg/h, %, etc.

Flow rates for:

SS316 Float:

– Water: 1 l/h up to 200,000 l/h (special ranges on request)

– Air: 0.03 Nm³/h up to 5,400 Nm³/h (special ranges on request)

PVDF Float:

– Water: 4 l/h up to 10,000 l/h (special ranges on request)

– Air: 0.13 Nm³/h up to 180 Nm³/h (special ranges on request)

Connection types: Thread type, flange type, trip clamp & sanitary (other on request)

Connection size: ½" ~ 6"

Mounting Length: 250mm standard for size ½"~5", 300mm standard for size 6"; Special length is on request

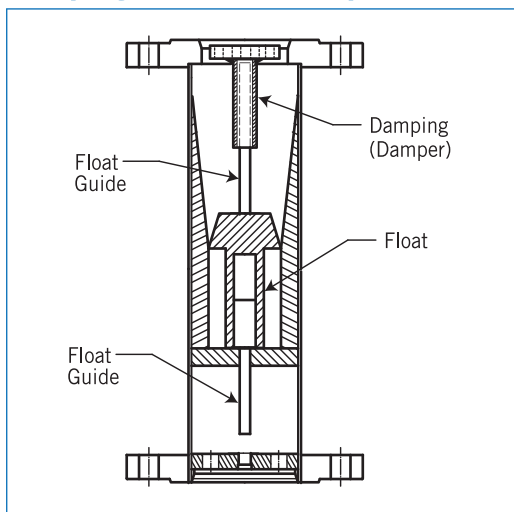
Temperature: -50°C to +200°C (300°C option)

Protection class: IP66

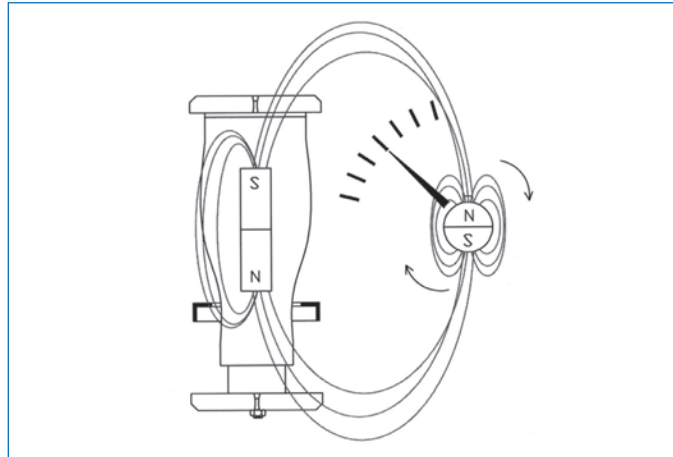
Accuracy: ±2% F.S (±1.6% F.S Option)

Max. pressure: 40 kg/cm², standard (Option: up to 100 kg/cm²)

Damping Mechanical (Option Function)

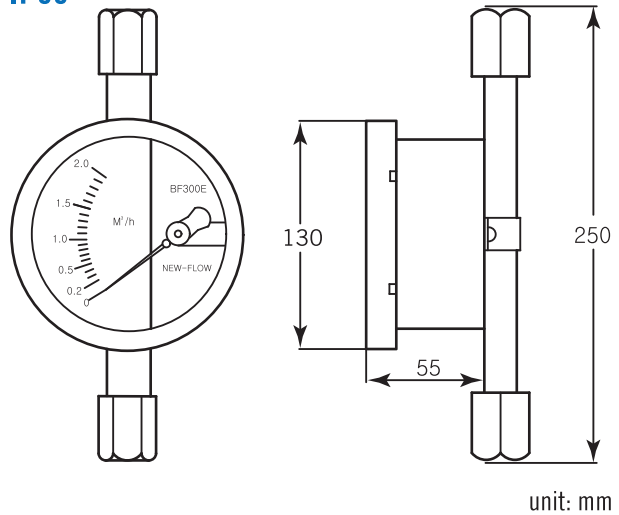


Principle

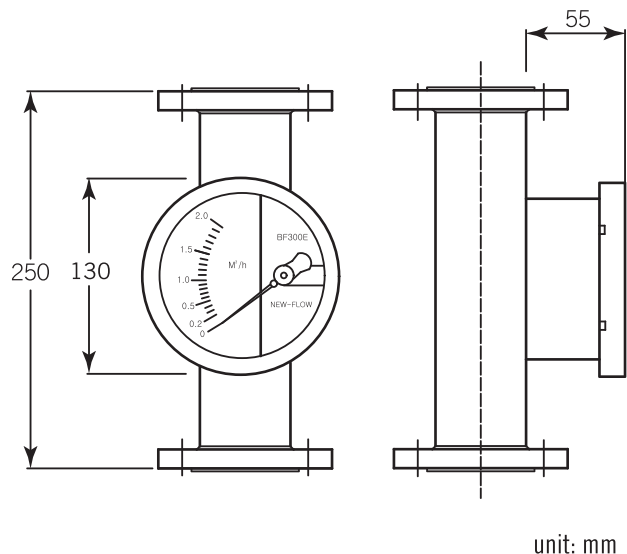


Dimensions

IP66



IP66



Standard Scales

A. Float Material: SS316, SS316L available

| Tube | L/H 20°C Water | NM ³ /H Air 0°C 1.013bar | PmmWater | Connection | Accuracy (NOTE 1.) |
|---------|----------------|-------------------------------------|----------|------------|--------------------|
| BF300Ea | 1 ~ 10 | 0.03 ~ 0.3 | ≤750 | ½" | ±5% F.S |
| BF300Eb | 1.8 ~ 18 | 0.06 ~ 0.6 | ≤750 | ½" | ±5% F.S |
| BF300Ec | 2.5 ~ 25 | 0.075 ~ 0.75 | ≤750 | ½" | ±5% F.S |
| BF3001E | 4 ~ 30 | 0.1 ~ 1 | ≤750 | ½" | ±5% F.S |
| BF3002E | 4 ~ 40 | 0.13 ~ 1.3 | ≤750 | ½" | ±5% F.S |
| BF3003E | 5.5 ~ 55 | 0.17 ~ 1.7 | ≤750 | ½" | ±5% F.S |
| BF3004E | 8 ~ 80 | 0.2 ~ 2 | ≤750 | ½" | ±2% F.S |
| BF3005E | 16 ~ 160 | 0.5 ~ 5 | ≤750 | ½" | ±2% F.S |
| BF3006E | 18 ~ 180 | 0.6 ~ 6 | ≤750 | ½" | ±2% F.S |
| BF3007E | 30 ~ 300 | 1 ~ 10 | ≤750 | ½" | ±2% F.S |
| BF3008E | 50 ~ 500 | 1.5 ~ 15 | ≤750 | ½" | ±2% F.S |
| BF3009E | 60 ~ 600 | 1.8 ~ 18 | ≤750 | ½" | ±2% F.S |
| BF3010E | 70 ~ 700 | 2 ~ 20 | ≤750 | ½" | ±2% F.S |
| BF3011E | 100 ~ 1000 | 3 ~ 30 | ≤750 | ¾" | ±2% F.S |
| BF3012E | 120 ~ 1200 | 4 ~ 40 | ≤750 | 1" | ±2% F.S |
| BF3013E | 160 ~ 1600 | 5 ~ 50 | ≤700 | 1" | ±2% F.S |
| BF3014E | 200 ~ 2000 | 6 ~ 60 | ≤700 | 1" | ±2% F.S |
| BF3015E | 240 ~ 2400 | 7 ~ 70 | ≤700 | 1" | ±2% F.S |
| BF3016E | 280 ~ 2800 | 8.5 ~ 85 | ≤700 | 1" | ±2% F.S |
| BF3017E | 320 ~ 3200 | 9 ~ 90 | ≤700 | 1" | ±2% F.S |
| BF3018E | 350 ~ 3500 | 10 ~ 100 | ≤700 | 1" | ±2% F.S |
| BF3019E | 500 ~ 5000 | 14 ~ 140 | ≤650 | 1½" | ±2% F.S |
| BF3020E | 600 ~ 6000 | 15 ~ 150 | ≤650 | 1½" | ±2% F.S |
| BF3021E | 700 ~ 7000 | 20 ~ 200 | ≤650 | 1½" | ±2% F.S |
| BF3022E | 800 ~ 8000 | 24 ~ 240 | ≤650 | 1½" | ±2% F.S |
| BF3023E | 1000 ~ 10000 | 30 ~ 300 | ≤650 | 2" | ±2% F.S |
| BF3024E | 1200 ~ 12000 | 35 ~ 350 | ≤650 | 2" | ±2% F.S |
| BF3025E | 1400 ~ 14000 | 40 ~ 400 | ≤650 | 2" | ±2% F.S |
| BF3026E | 1500 ~ 15000 | 45 ~ 450 | ≤1000 | 2" | ±2% F.S |
| BF3027E | 1800 ~ 18000 | 60 ~ 600 | ≤800 | 2½" | ±2% F.S |
| BF3028E | 2000 ~ 20000 | 75 ~ 750 | ≤800 | 2½" | ±2% F.S |
| BF3029E | 2300 ~ 23000 | 90 ~ 900 | ≤850 | 3" | ±2% F.S |
| BF3030E | 2500 ~ 25000 | 120 ~ 1200 | ≤1000 | 3" | ±2% F.S |
| BF3031E | 2800 ~ 28000 | ----- | ≤1100 | 3" | ±2% F.S |
| BF3032E | 3000 ~ 30000 | ----- | ≤1200 | 3" | ±2% F.S |
| BF300Ed | 4000 ~ 40000 | 120 ~ 1200 | ≤2000 | 3" | ±2% F.S |
| BF300Ee | 6000 ~ 60000 | 180 ~ 1800 | ≤2200 | 3" | ±2% F.S |
| BF3033E | 3500 ~ 35000 | ----- | ≤1000 | 4" | ±2% F.S |
| BF3034E | 4000 ~ 40000 | ----- | ≤1000 | 4" | ±2% F.S |
| BF3035E | 5000 ~ 50000 | ----- | ≤1200 | 4" | ±2% F.S |
| BF3036E | 6000 ~ 60000 | ----- | ≤1500 | 4" | ±2% F.S |
| BF300Ef | 8500 ~ 85000 | 260 ~ 2600 | ≤2000 | 4" | ±2% F.S |
| BF300Eg | 10000 ~ 90000 | 300 ~ 2900 | ≤2200 | 4" | ±2% F.S |
| BF300Eh | 8000 ~ 80000 | 240 ~ 2400 | ≤2000 | 5" | ±2% F.S |
| BF3037E | 10000 ~ 100000 | 300 ~ 3000 | ≤2000 | 5" | ±2% F.S |
| BF3038E | 12000 ~ 120000 | 360 ~ 3600 | ≤2000 | 5" | ±2% F.S |
| BF3039E | 15000 ~ 150000 | 450 ~ 4500 | ≤2500 | 6" | ±2% F.S |
| BF3040E | 20000 ~ 200000 | 500 ~ 5400 | ≤2500 | 6" | ±2% F.S |

B. Float Material: PVDF (only SS316+PTFE lining wetted parts available)

| Tube | L/H 20°C Water | NM ³ /H Air 0°C 1.013bar | PmmWater | Connection | Accuracy (NOTE 1.) |
|----------|----------------|-------------------------------------|----------|------------|--------------------|
| BF3001EP | 4 ~ 40 | 0.13 ~ 1.3 | ≤750 | ½" | ±5% F.S |
| BF3002EP | 5.5 ~ 55 | 0.17 ~ 1.7 | ≤750 | ½" | ±5% F.S |
| BF3003EP | 8 ~ 80 | 0.2 ~ 2 | ≤750 | ½" | ±2% F.S |
| BF3004EP | 16 ~ 160 | 0.5 ~ 5 | ≤750 | ½" | ±2% F.S |
| BF3005EP | 28 ~ 280 | 0.9 ~ 9 | ≤750 | ¾" | ±2% F.S |
| BF3006EP | 35 ~ 350 | 1.1 ~ 11 | ≤750 | ¾" | ±2% F.S |
| BF3007EP | 40 ~ 400 | 1.3 ~ 13 | ≤750 | ¾" | ±2% F.S |
| BF3008EP | 50 ~ 500 | 1.5 ~ 15 | ≤750 | 1" | ±2% F.S |
| BF3009EP | 70 ~ 700 | 2 ~ 20 | ≤700 | 1" | ±2% F.S |
| BF3010EP | 90 ~ 900 | 2.5 ~ 25 | ≤700 | 1" | ±2% F.S |
| BF3011EP | 100 ~ 1000 | 3 ~ 30 | ≤700 | 1" | ±2% F.S |
| BF3012EP | 120 ~ 1200 | 4 ~ 40 | ≤700 | 1" | ±2% F.S |
| BF3013EP | 160 ~ 1600 | 5 ~ 50 | ≤700 | 1" | ±2% F.S |
| BF3014EP | 200 ~ 2000 | 6 ~ 60 | ≤700 | 1" | ±2% F.S |
| BF3015EP | 250 ~ 2500 | 7 ~ 70 | ≤650 | 1" | ±2% F.S |
| BF3016EP | 300 ~ 3000 | 9 ~ 90 | ≤650 | 1½" | ±2% F.S |
| BF3017EP | 350 ~ 3500 | 10 ~ 100 | ≤650 | 1½" | ±2% F.S |
| BF3018EP | 450 ~ 4500 | 12 ~ 120 | ≤650 | 1½" | ±2% F.S |
| BF3019EP | 450 ~ 4500 | 13 ~ 130 | ≤650 | 1½" | ±2% F.S |
| BF3020EP | 500 ~ 5000 | 14 ~ 140 | ≤650 | 1½" | ±2% F.S |
| BF3021EP | 650 ~ 6500 | 18 ~ 180 | ≤650 | 2" | ±2% F.S |
| BF3022EP | 700 ~ 7000 | ----- | ≤650 | 2" | ±2% F.S |
| BF3023EP | 800 ~ 8000 | ----- | ≤650 | 2" | ±2% F.S |
| BF3024EP | 900 ~ 9000 | ----- | ≤650 | 2½" | ±2% F.S |
| BF3025EP | 1000 ~ 10000 | ----- | ≤650 | 2½" | ±2% F.S |

NOTE.

- The accuracy ±5% F.S for tube BF300Ea/b/c and BF3001E(P)-BF3003E(P). The accuracy ±2% F.S for tube BF3004E-BF3040E and BF3004EP-BF3025EP; option ±1.6% F.S on request.
- Performance Technical Data are effective with date of issue and are subject to change without prior notice.

Ordering Information

| | | | | | | |
|---------------|-------------|-----------------|--------------------------------|------------------------|--|-------------------------|
| BF300E | Code | Type | Code | Connection size | | |
| | G | Indicating only | 2B | 1/2" BSP (Female) | | |
| | | Code | Body & wetted parts | 2N | 1/2" NPT (Female) | |
| | | A | SS316, standard | 6B | 3/4" BSP (Female) | |
| | | B | SS316L | 6N | 3/4" NPT (Female) | |
| | | C | PTFE lining + stainless steel | 10B | 1" BSP (Female) | |
| | | D | option | 10N | 1" NPT (Female) | |
| | | Code | Float material | 4F | 1/2" Flange | |
| | | A | SS316 | 6F | 3/4" Flange | |
| | | B | SS316L | 10F | 1" Flange | |
| | | C | PVDF | 12F | 1 1/2" Flange | |
| | | D | option | 20F | 2" Flange | |
| | | Code | Connection rating | 22F | 2 1/2" Flange | |
| | | 0 | Thread connection | 30F | 3" Flange | |
| | | 5 | JIS 5K | 40F | 4" Flange | |
| | | 10 | JIS 10K | 50F | 5" Flange | |
| | | 20 | JIS 20K | 60F | 6" Flange | |
| | | 15 | ANSI 150# | | Code | Protection Class |
| | | 30 | ANSI 300# | | IP | IP66 |
| | | 60 | ANSI 600# | | Code | Fluid |
| | | 90 | ANSI 900# | | G | Gas |
| | | T | Other: _____ | | O | Oil |
| | | | | | L | Liquid |
| | | | | | S | Steam |
| | | | | | Code | Range |
| | | | | | S | Standard range |
| | | | | | Please directly fill out the flow range in the order code. | |
| | | | | | Code | Damper |
| | | | | | D | With |
| | | | | | N | Without |

| | | | | | | | | | | | | | | | | | |
|---------------|--|--|--|--|--|--|--|--|--|--|--|--|--|--|--|--|--|
| BF300E | | | | | | | | | | | | | | | | | |
|---------------|--|--|--|--|--|--|--|--|--|--|--|--|--|--|--|--|--|

WWW.NEW-FLOW.COM • TEL: 886-7-8135500 • FAX: 886-7-8225588 • Email: info@new-flow.com

FLOW

NOTE:

1. Custom-made flow range and flange size upon request.
2. Please fill in the ordering information and service condition, and fax this sheet along with your inquiry to 886-7-8225588.

Special instruction, if any:

Service Condition:
 Fluid name: _____
 Sp. Gr. (density): _____
 Viscosity: _____
 Press.: _____
 Temp.: _____
 Full scale: _____