

CHERRY BURRELL® TYPE DIAPHRAGM SEAL DT112

DT112 Cherry Burrell® Type diaphragm seal is designed to be used in food and pharmaceutical industry. It is easy to assemble with pressure gauges, pressure switches and pressure instruments.

Technical Data

- Instrument connection:** female thread ¼" to ½" NPT or BSP
- Process connection:** 1½", 2", 3" (CB Ferrule)
- Temperature Limited:** -40~+150°C cooling element or capillary line up to 350°C
- Pressure Range Limited:**
 - 1½" CB Ferrule: Maximum up to 25 kg/cm²
Minimum 0~6 kg/cm²
 - 2" CB Ferrule: Maximum up to 25 kg/cm²
Minimum 0~4 kg/cm²
 - 3" CB Ferrule: Maximum up to 25 kg/cm²
Minimum (-1)~1.5 kg/cm²
- Material:** Body- SS316 (standard); Options- SS316L, Hastelloy C276, and others available on request
- Membrane:** SS316L (standard); Options- Hastelloy C276, and others on request

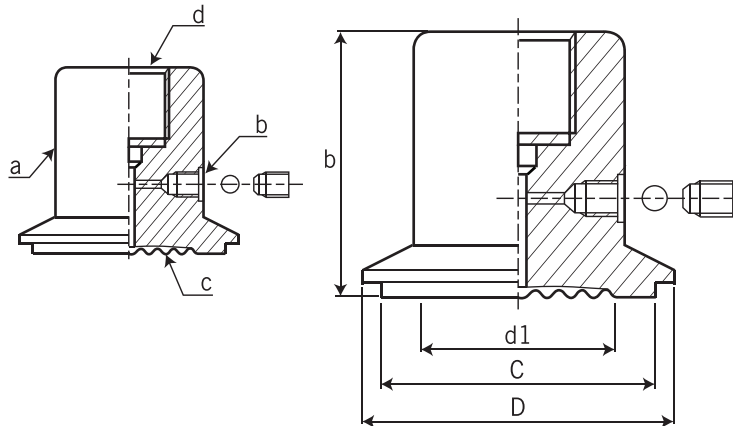


Approvals:



Dimensions

| Item | Description of Parts |
|------|-----------------------|
| a | Upper housing |
| b | Filling port |
| c | Membrane |
| d | Instrument connection |



Dimensional Data

| ISO | b | d1 | C | D |
|-----|------|------|------|------|
| 1½" | 35 | 32 | 44.2 | 50.8 |
| 2" | 36.5 | 39.8 | 56.9 | 67.0 |
| 3" | 40.4 | 66.8 | 83.8 | 98.3 |

unit=mm

Ordering Information

| DT112 | Code | Instrument Connection (Female) |
|-------------------------------|------|--|
| | | (A) ¼"BSP (B) ¼"NPT (C) ⅜"BSP (D) ⅜"NPT (E) ½"BSP (F) ½"NPT |
| | | Code Process Connection Size |
| | A | 1½" CB Ferrule |
| | B | 2" CB Ferrule |
| | C | 3" CB Ferrule |
| | | Code Body Material |
| | | (S) SS316 (O) option |
| | | Code Membrane Material |
| | | (1) SS316L (2) Hastelloy C276 (3) Option |
| | | Code Pressure Range |
| | | (O) Diaphragm seal only (R) Directly fill out the pressure range |
| DT112 | | |
| Complete Ordering Code | | |