

MINI TYPE WHEEL FLOW METER HF150

Technical Data

Connection Size: 1/4", 3/8", 1/2" and 3/4" NPT female standard;
PT, BSP(PF) thread available

Power Supply: 3.8V to 30VDC

Output: Sink (NPN)

Material: Body- SCS14; Window- Acrylic; Cover- ABS;
Wheel- PVDF; Shaft- SS316; Bearings- PVDF; Washer- PTFE;
Bush- Polyacetal; Cable- PVC; O-Ring- NBR

Housing Protection: IP65

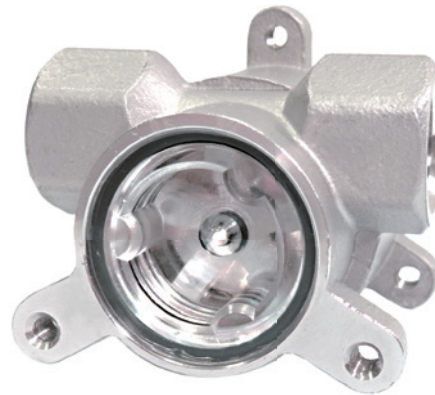
Working Viscosity: Less than 2 cps

Working Temperature: Standard 0~50°C

Working Pressure: Maximum 1.0 MPa @25°C

Accuracy: Pulse output linearity: ±3%F.S

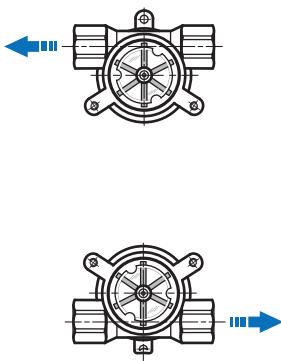
Installation: Horizontal or Vertical available



Approvals:



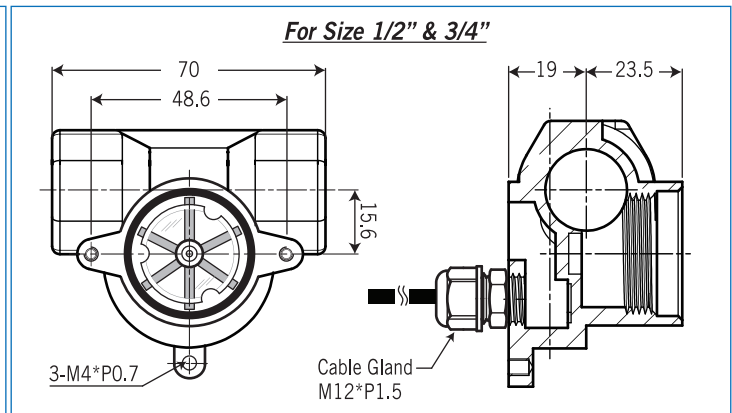
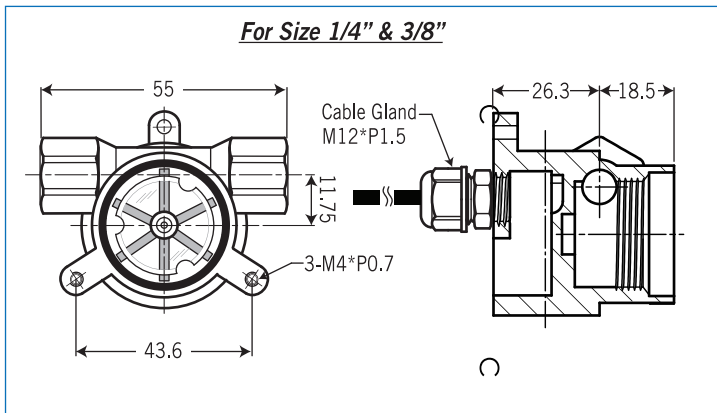
Mounting Position



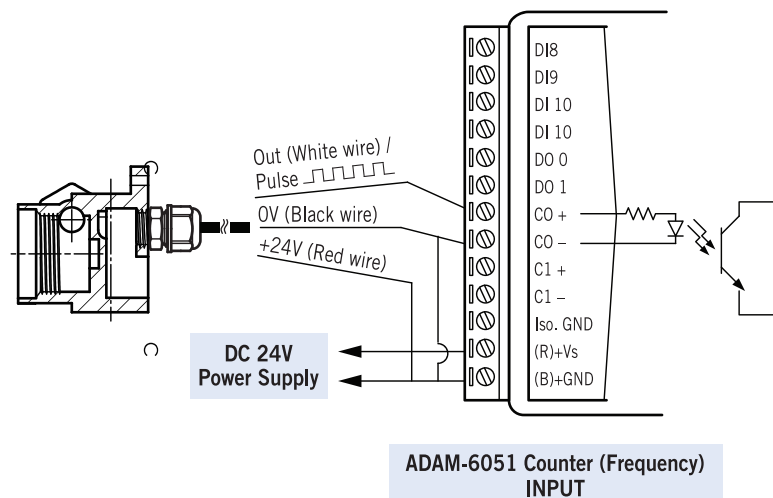
Range Table

| SIZE | FLOW RATES (LPM) | NOMINAL FACTORS PER LITER | ΔP (mmH ₂ O) |
|------|------------------|---------------------------|-------------------------|
| 1/4" | 1.5~8 | k=1420 | 2000 |
| 3/8" | 2~20 | k=930 | 2000 |
| 1/2" | 7~70 | k=195 | 1500 |
| 3/4" | 10~100 | k=142 | 1500 |

Dimensions-mm



Wire Drawing



Ordering information

| HF150 | Code | Process Connection Size |
|-------|-------------|-------------------------------------|
| | | (1) 1/4" (2) 3/8" (3) 1/2" (4) 3/4" |
| | Code | Thread Type |
| | N | NPT female, standard |
| | P | PT female |
| | B | BSP(PF) female |
| | Code | Body Material |
| | A | SCS14 |
| | Code | Cover Material |
| | 1 | ABS |
| | Code | Output |
| | 1 | Sink (NPN) output |
| HF150 | | Complete Ordering Code |