

# MINI SIZE MAGNETIC LEVEL GAUGE SN SERIES

## Technical Data

**Application for non and low viscosity liquids system**

**In equipment for oil, food, beverages, medical, petrol chemical, water**

**Chamber size:** 1" Pipe, SCH10

**Connection size:** 1/2" ~ 1"

**Connection rating:** Thread type: BSP(PF), NPT (with union) available. Special size on request.

Flange type: JIS, ANSI, DIN rating available. Special size on request.

**Center to center length:** Maximum 2 meters

**Material:** Chamber & Wetted parts—SS316 ; Indicating case—SS316

Indicating strips—Plastic

**Indicating gauge orientation adjustable**

**Pressure limited:** 10 kg/cm<sup>2</sup> (150psi)

**Temperature limited:** -20°C~+90°C

**Sp.Gr.:** 0.75 Low limited

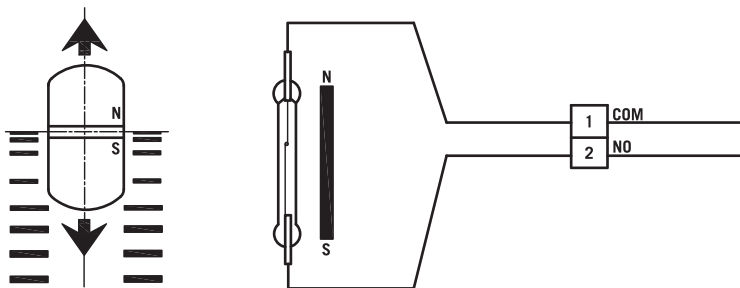
**Reed switch type and transmitter assembly available**

## Switch Function

### Reed Switch Type (SPST)

**Alarm Switch:** form A N.O. type bistable switch

**Rating:** AC 125V 0.5A / DC 100V 10W / Max. DC 250V < 40 mA



### Approvals:



## Transmitter Type

**Potentiometer I/P**

**Output Signals:** 4~20mA DC,  
Load resistance R<sub>L</sub> (max)=(V<sub>s</sub>-10)x50Ω (2-Wire)

**Input Range:** 100Ω to 45KΩ (3-Wire)

**Output Adjustment Range:** Zero adjustment 0~15%

**Accuracy:** ±0.1% F.S (at 23°C)

**Linearity:** ±0.1% F.S

**Supply Voltage:** 10~30V DC

**Temp. Coefficient:** ±0.02%/°C

**Operating Temp.:** -5 ~ +70/°C

**Operating Humidity:** 0~90% RH

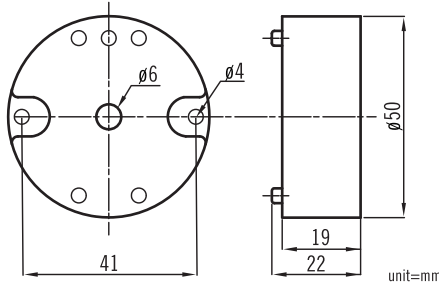
**Terminal:** DIN type

**Installation:** Head and wall mounting

**Case Material:** Nylon 6 resin (Black)

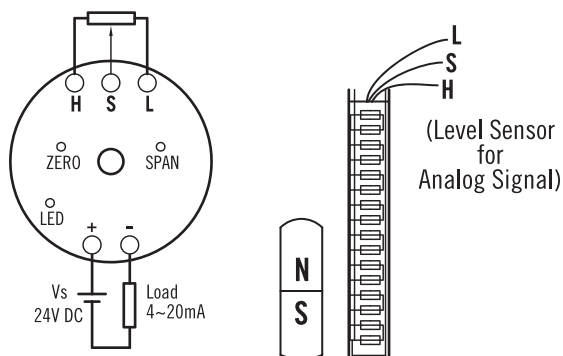
**Weight:** about 50 grams

### Dimensions



GL-T

### Sketch Terminal & Level Indicating Strip



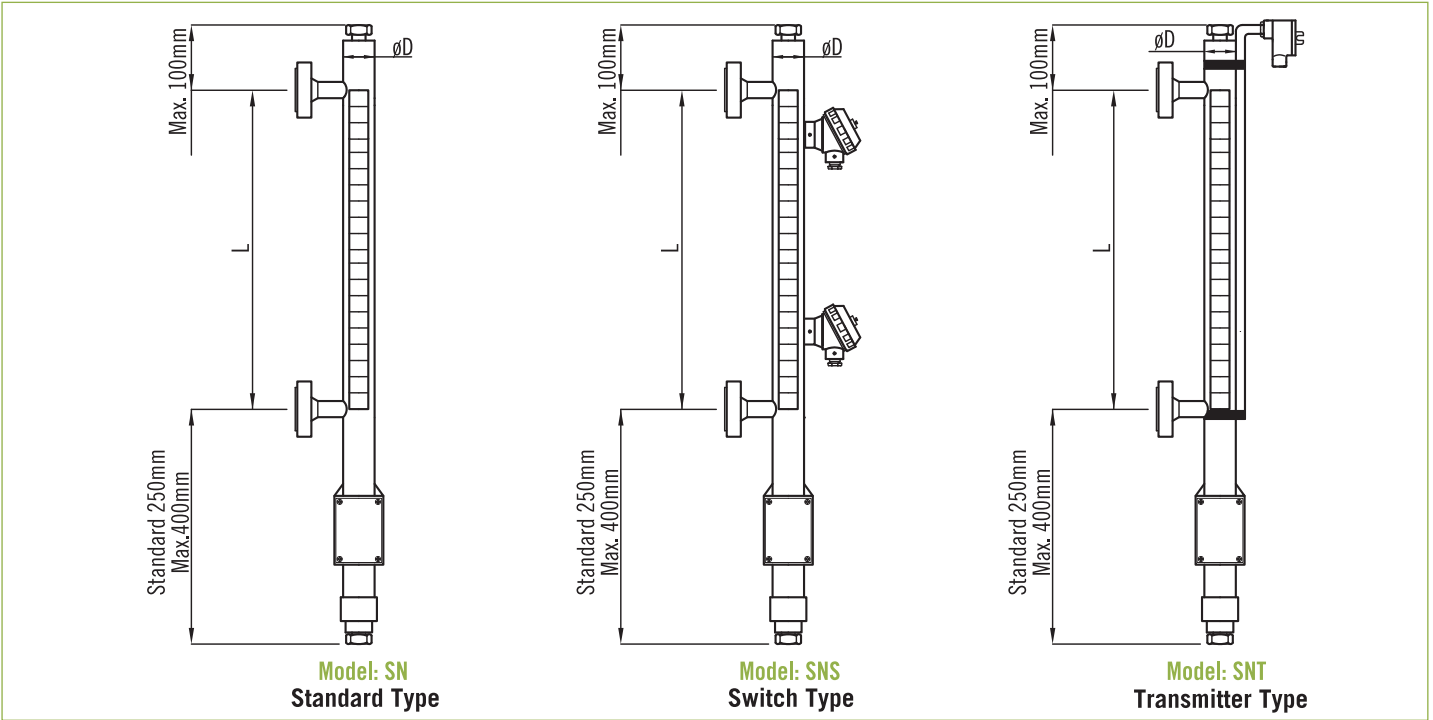
### Features

- ISO 9001 and CE certificate
- High immunity to external noise
- LED indication and DC power polarity protection
- High reliability, lasting durability and low cost

### Application

- Position of valve, damper and other devices

SN Standard Type—Side Mounting Series



Model: SN  
Standard Type

Model: SNS  
Switch Type

Model: SNT  
Transmitter Type

Ordering Information

SN Type	Code	Model							Code	Transmitter Type						
	SN	Standard type	SNS	Switch type	SNT	Transmitter Type			(1) 4~20mA Transmitter (0) without							
		<b>Code</b>	<b>Connection</b>							<b>Code</b>	<b>Scale Plate</b>					
		A	½"	B	¾"	C	1"	0	Option	A	Yes					
			<b>Code</b>	<b>Connection Rating</b>							B	Without				
				Thread type	(1) BSPM (2) NPTM							<b>Code</b>	<b>Switch or Transmitter Housing</b>			
				Flange type	(3) JIS 10K (4) ANSI 150# (5) PN16							1	Weather proof IP65			
				(T) other:	_____							2	Explosion proof			
			<b>Code</b>	<b>Material of Wetted Parts</b>								<b>Code</b>	<b>Specific Gravity</b>			
			S	SS316	0	Option						Please directly fill out the Sp. Gr. in the of liquid order code.				
				<b>Code</b>	<b>Material of Indicating Case</b>									<b>Code</b>	<b>Setting Point &amp; Switch Acting Functions</b>	
				S	SS316								Please fill in the requested length and float rise↑ON or fall down↓ON			
				<b>Code</b>	<b>Material of Indicating Strips</b>								ℓ1= ___mm <input type="checkbox"/> ON			
				A	Plastic								ℓ2= ___mm <input type="checkbox"/> ON			
				<b>Code</b>	<b>Switch Type</b>								ℓ3= ___mm <input type="checkbox"/> ON			
				0	Without Switch								ℓ4= ___mm <input type="checkbox"/> ON			
				1	Reed Switch											
				2	Option											
				<b>Code</b>	<b>Switch Point</b>											
				A	1											
				B	2											
				C	3											
				D	4											
				O	without											
<b>SN Type</b>										+						<b>Complete Ordering Code</b>